



College Applications and CKI

Khijani Williams, Jamaica District Governor
Hope Roundcount, International Trustee

Jamaica District Governor
Khijani Williams

Years in the K-Family: 6

Fun fact: I do competitive swimming and I've been swimming since I was 3 years old

Favorite Key Club Memory:
International Convention in DC



Can-In-WIN'S International Trustee Hope Roundcount

Years in the K-Family: 4







Fun fact: I enjoy tinkering and building robots!

Favorite Key Club Memory: my home District Convention











Vocabulary

- **EARLY ACTION:** An option to submit your applications before the regular deadlines and receive results early
 - **EARLY DECISION:** Similar to early application, but this is binding.
 - **ROLLING ADMISSION:** An admission policy of considering each application as soon as all required information has been received, rather than setting an application deadline
 - **DEFERRED:** A postponed application result; not a denial or an acceptance
- 
- 
- 
- 
- 
- 



Vocabulary

- **LEGACY APPLICANT:** A college applicant with a relative who graduated from that college
 - **NEED-BLIND ADMISSION:** A policy of making admission decisions without considering the financial circumstances of applicants
 - **OPEN ADMISSION:** A policy of accepting any high school graduate, no matter what his or her grades are, until all spaces in the incoming class are filled
 - **WEIGHTED V. UNWEIGHTED GPA:** Unweighted GPA is your regular 4.0-scale grade point average. Weight GPA can look different based on your school.
- 
- 
- 
- 
- 
- 



01

The Application Process

-
-

Due Dates

Date	Action
NOW!	Start your application.
Nov. 1, 2022	Early Application Deadline
Dec. 15, 2022	EA Decisions Released
Jan. 1, 2023	Regular Admission Applications due
Mid-March to Early April	Regular Admission Decisions Released
May 1, 2023	Your college decision is due

When do I start?

- Junior Year



How to Start

Common App

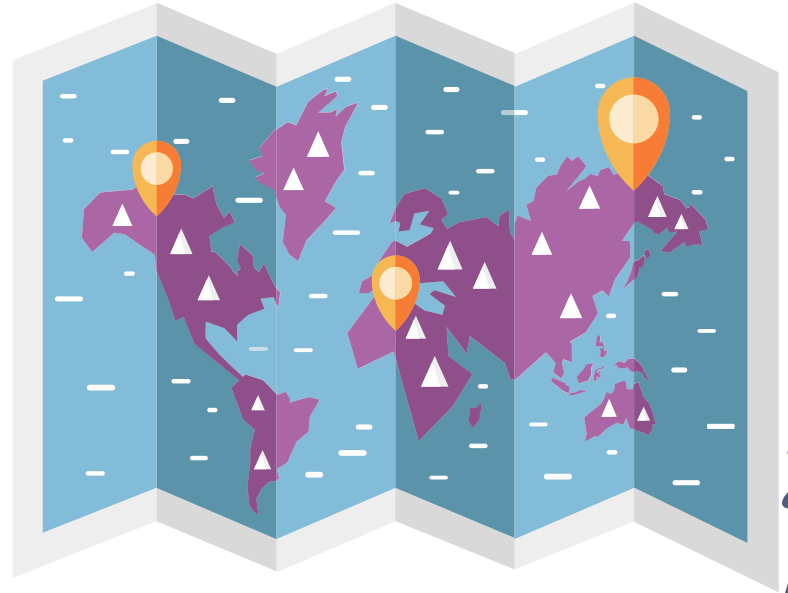
Most US Colleges use
Common App for
their Applications



Tips for Finding Your Fit

What aspect of college is most important to you?

- Cost
- Major
- Extracurriculars, communities, and social life
- Environmentally friendly?
- Your political or religious match?
- Location
- Need-blind, consideration of legacies, merit- or need-based scholarships



Tips For Getting Accepted

01

Essays

Tell a story, be positive,
tie it back to your school

02

Be yourself

Really let your own
personality and values
shine through!

03

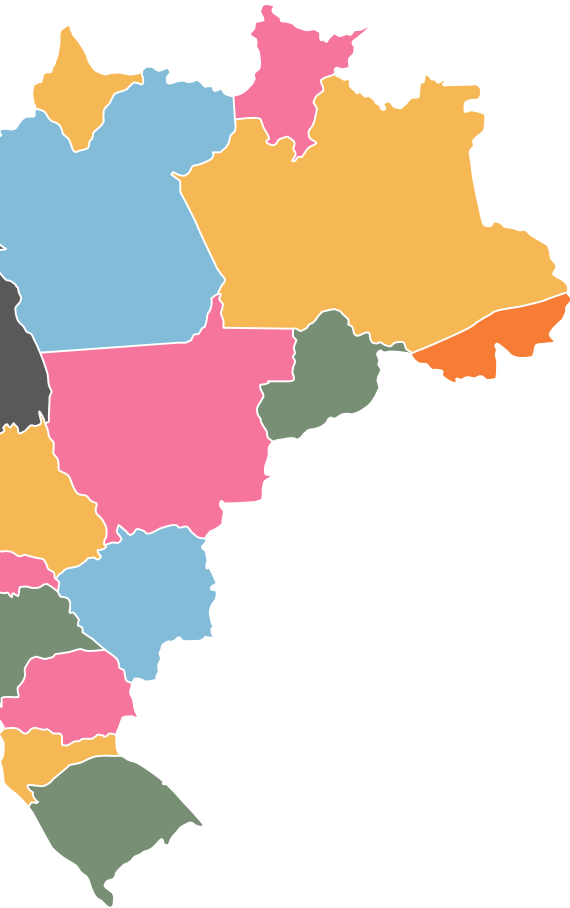
Extracurriculars

Pick what's really
important to you

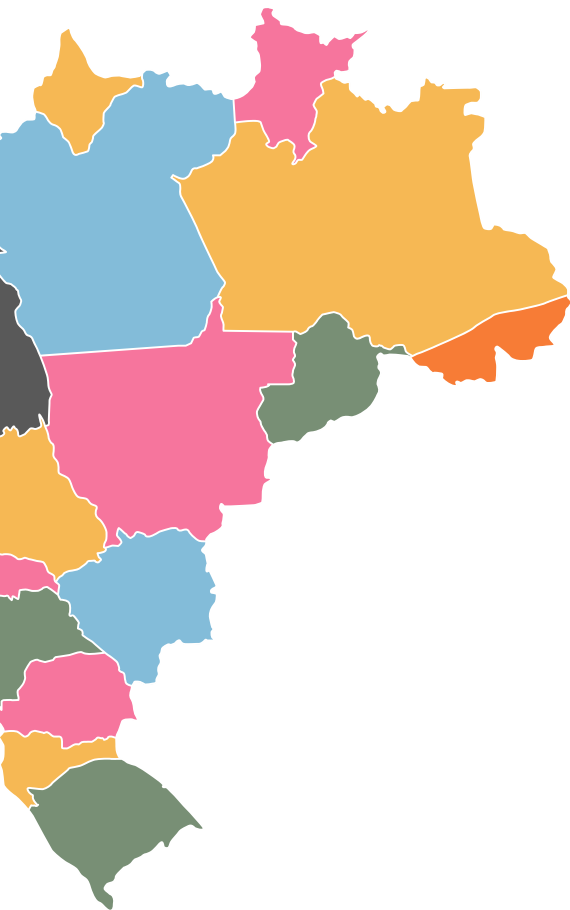
04

Know your school

Know their core values,
programs, and what
they might look for in
applicants



Tips For Getting Accepted



05

Letters of Recommendation

Tell a story, be positive,
tie it back to your school

06

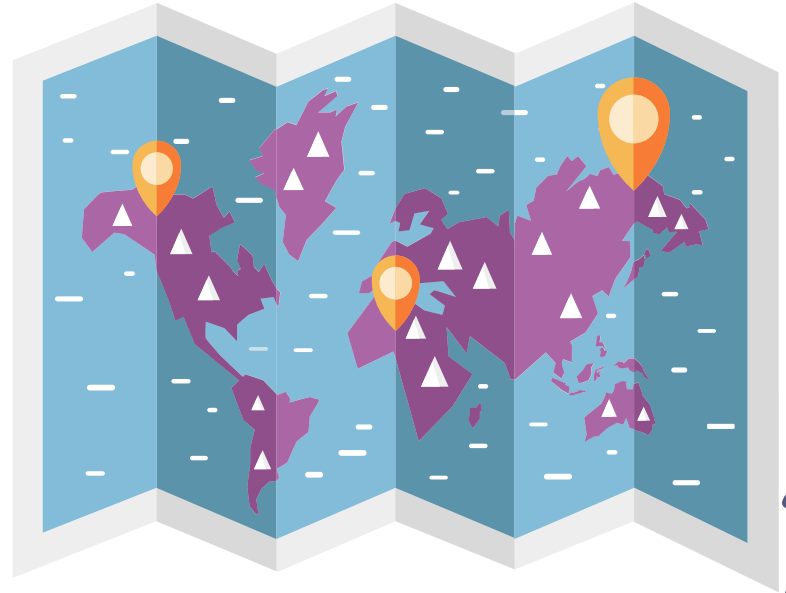
Interviews

Know what's expected,
prepare some common
answers ahead of time



CollegeWise: The Road To Success

- Runway: Free online courses to walk you through the college process
- Resource Library: guides to everything you need to know about college admissions!
- Counseling, tutoring, and test prep services
- go.collegewise.com/key-club





02

Applying to Schools
Internationally

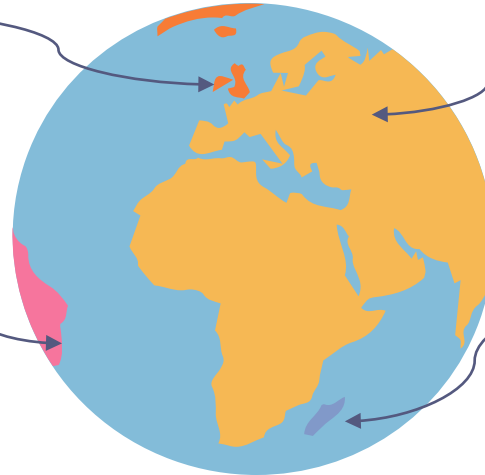
Types of International Studies

Exchange Programs

Apply directly as
an international
applicant

Field Research

Study Abroad
Programs



Types of International Studies



Exchange Programs: Switch places with a student from another country

Study Abroad Programs: Through your university or a 3rd party program, study at a university outside of your home country

The difference: Exchange students do not pay tuition fees to the exchange institution, whereas study abroad students pay tuition fees to the host university. Also, exchange sometimes doesn't affect GPA while study abroad usually does.

This also depends on your program.

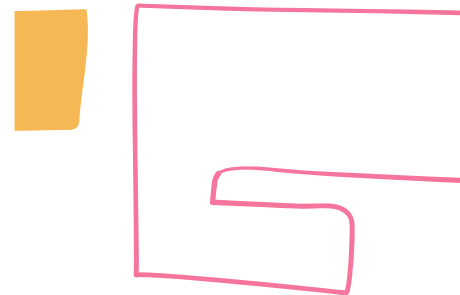
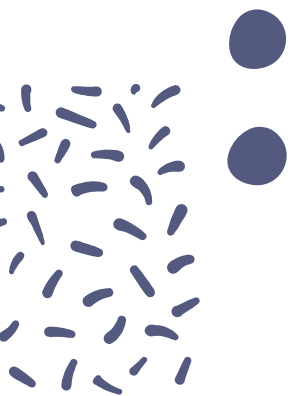
Types of International Studies



Apply Directly as an international applicant: Apply to the university as normal, it's just not within your home country. Pay attention to application requirements as an international applicant, like having a passport or visa.

Field Research: Conduct research on the ground at a site related to your major. For example, a marine biologist may conduct field research in Guam and an archaeologist may go to Malaysia.

03
CKI



What to Expect from CKI



CKI is Key Club for college students!

- Service
- Fundraising
- Building new relationships!



How Do I Know If My University Has CKI?

Use this map: <https://www.circlek.org/find-a-club/>



[About](#)

[Membership](#)

[Resources](#)

[News & Events](#)

[Donate](#)

[Contact Us](#)

Trick-or-Treat for UNICEF

Find a club near you or make a donation that supports the work of our clubs. Either way you're helping change lives and uplift communities.

My location (address, **Full City Name** or postal code)

Search radius (Max: 100 miles or 161 km)

How To Start A CKI



Step one: find a Kiwanis club that can sponsor your CKI club.

- <https://locator.kiwanis.org/>

Step two: Find a staff member at your university who is willing to be your advisor.

Step three: Find at least 15 members.

Step four: Complete the paperwork.

- <https://slp-chartering.kiwanis.org/>



Tips from the CKI International Vice President

Share your opinion!



With this feedback form, tell us if we did a good job with this workshop as well as what we can improve in the future.

And that's a wrap! Thank you for letting us
bring this workshop to the big screens.

Questions?

Khijani

khijani.williams@gmail.com

+1 (876) 581-2552

Hope

hope.roundcount@keyclub.org

+1 (217) 433-3809